

# HUNTERS<sup>®</sup>

HERE TO GET *you* THERE



## Redding House

King Henrys Wharf, SE18 5SR

£1,550 Per Calendar Month



Offered to let and available immediately is this charming ground floor two-bedroom apartment offers a serene escape from the hustle and bustle of city life.

Upon entering, you're greeted by a spacious lounge/dining area, perfect for entertaining guests or simply unwinding after a long day. The layout flows seamlessly into a well-appointed bathroom, providing all the essentials for your daily routine. Two comfortable bedrooms await, offering peaceful retreats for restful nights.

Situated along the picturesque riverfront, residents here benefit from easy access to transportation options, including Woolwich Dockyard Station, Woolwich DLR, and The Elizabeth Line. Whether you're commuting to work or exploring the city, convenience is at your doorstep.



COMMUNAL ENTRANCE

ENTRANCE HALL

LOUNGE 14'4 x 13'11 (4.37m x 4.24m)

KITCHEN 9'1 x 7'10 (2.77m x 2.39m)

BEDROOM ONE 11'3 x 9'1 (3.43m x 2.77m)

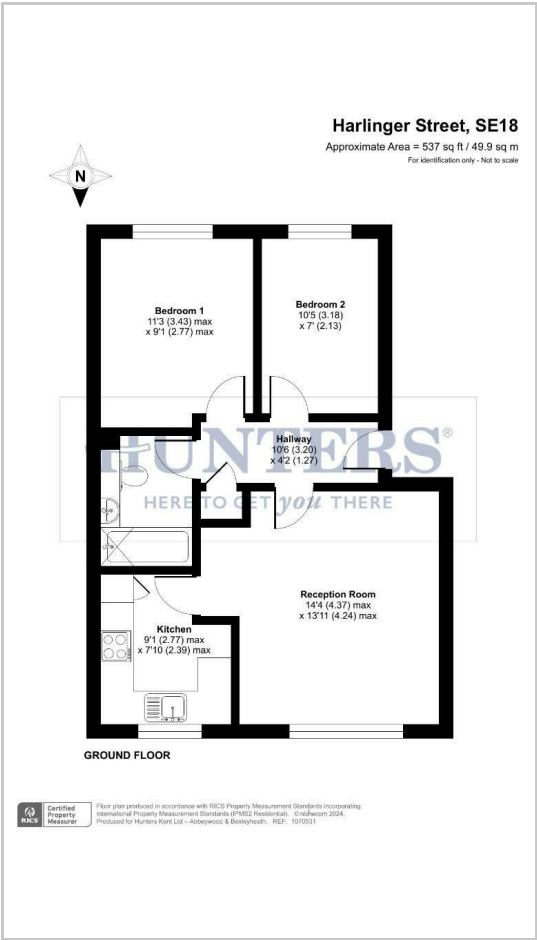
BEDROOM TWO 10'5 x 7 (3.18m x 2.13m)

BATHROOM

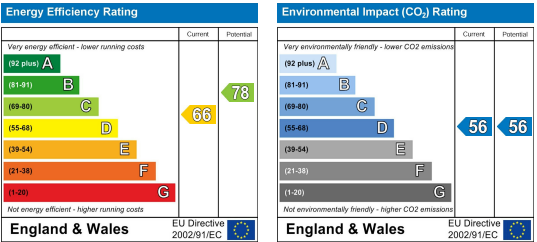
Area Map



Floor Plans



Energy Efficiency Graph



These particulars are intended to give a fair and reliable description of the property but no responsibility for any inaccuracy or error can be accepted and do not constitute an offer or contract. We have not tested any services or appliances (including central heating if fitted) referred to in these particulars and the purchasers are advised to satisfy themselves as to the working order and condition. If a property is unoccupied at any time there may be reconnection charges for any switched off/disconnected or drained services or appliances - All measurements are approximate.

**THINKING OF SELLING?** If you are thinking of selling your home or just curious to discover the value of your property, Hunters would be pleased to provide free, no obligation sales and marketing advice. Even if your home is outside the area covered by our local offices we can arrange a Market Appraisal through our national network of Hunters estate agents.